

2020 BOX Catalog



NEW Couture Collection



PRESENTATION BOX+DISPLAY
WE MAKE FIRST IMPRESSIONS LAST.



ABOUT US

Presentation Box + Display is a division of International Packaging, the largest and most respected jewelry packaging company in the world. Founded in 1974, the company is a third - generation family - owned business. With headquarters in Pawtucket, RI we employ over 300 people, many of whom are second and third-generation.

The Company's product offering includes jewelry boxes and pouches, showcase displays, and gift wrapping supplies.

We abide by the following basic principle:

To help our customers increase their sales and profits.





TABLE OF CONTENTS

About Us	2	Presidential Collection	34
NEW for 2020	4	Celebration Plus Collection	36
Stock Branded Boxes	6	Celebrations Collection	38
Couture Collection	8	Carriage Collection	40
Heritage Collection	10	Formal Magnetic Collection	42
Slim Engagement Ring Box	12	Formal Collection	44
Radiance Collection	14	Sterling Collection	46
Matte Wood Collection	16	Cotton Fill Collection	48
Contempo Collection	18	Pouches	50
Camelot II Collection	20	Pearl Folder Collection	52
Majestic Collection	22	Tote Bag Collection	54
Carousel Collection	24	Finishing Touch	56
Crown Collection	26	Tamper-Evident Shipping Boxes	58
Crown Black Collection	28	Custom Boxes	60
Luminous Collection	30	Ordering Information	66
Regency Collection	32		

New for 2020



At Presentation Box + Display sustainability, branding and being a **sustaining resource** has been a driving force internally or years. Internally it has always been important to us that our products are **made of recycled material** and we champion that fact that **jewelry packaging is reusable by the end consumer**.

Ultimately making sure your store or brand name resonates with your customer for years to come through their packaging has been our main goal. We view **ourselves as an extension of your brand** and a **sustaining resource** not just through the products we sell but the **knowledge we provide you**.

To ring in the new decade we want to educate our customers on which of our products are **green, sustainable, and domestically made**. As always we offer **free logo imprinting** and have a wide range of customizations available to create exactly what you need. In 2020 there is one thing you can count on - **Presentation Box + Display is here to make your life easier!**



Made From Recycled Materials

Products with our recycled symbol indicate that this product is made from recycled materials. The recycled content can vary product to product, ranging from 30% to 99%. To find out specific details about this product, please contact our customer service team.



Recyclable

Products with the recyclable symbol indicates that this item can fully be recycled in accordance with local regulations.



Re-Usable

Products with this symbol have been designated by the ITC (International Trade Commission) to be long-term use keepsake product that is not normally added to the waste stream. These products are recognized to be kept & re-used by the consumer.



Origin Sticker & Tariff Free

Products having no import surcharges which add to their higher costs. In addition these products do not require a country of origin marking (i.e. "Made in China") that is required by law to be applied until the product has been delivered to the final customer.



Sustainable

Products that are termed Sustainable means they are produced and use methods, systems and materials that won't deplete resources or harm natural cycles.



Custom Design Available

The possibilities are endless when you create Custom Packaging with us. Create the custom look for your brand with our team of experts. With years of industry knowledge we can guide you through style and material choices, while making sure your product is created on time, and keep you within budget. Combine this with our FlexShip program and you have a winning solution.



FREE Logo

Printing your logo in one of our boxes is always FREE. Our favorite method of printing is Hot Stamping, creating a classic eye catching look for your packaging. With Silver and Gold two of the most popular foil options we have many other colors to choose from. Contact us to get started.



Made in the USA

Products with this designation have been proudly made in the United States of America!

STOCK BRANDED BOXES

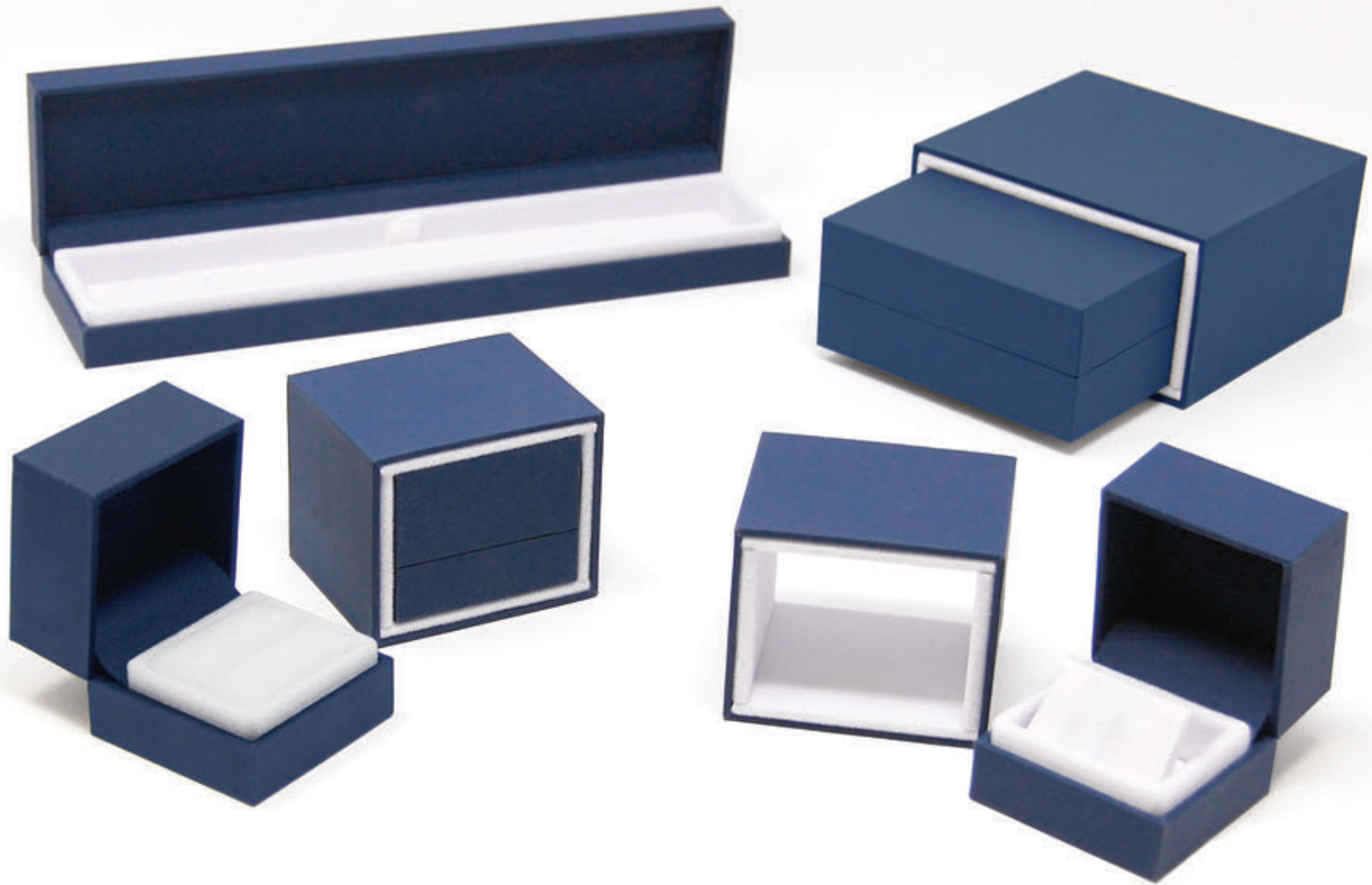




STOCK BRANDED BOXES

In-stock jewelry packaging that's easily customized with your logo to fit any style and budget.

- Drive your brand recognition with free imprinting.
- We have the lowest minimum order in the industry.
- We offer a wide selection of beautiful, easy-to-use boxes and packaging.
- Don't wait for boxes from China. We deliver one dozen or 100 dozen boxes in 10 days or less.

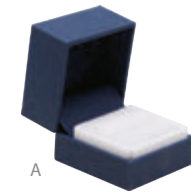


THE COUTURE COLLECTION **NEW**

These smooth-to-the-touch boxes are available in four different sizes, offering packaging solutions for a wide variety of jewelry. Each box comes with a coordinated, deluxe sleeve. Choose between Blue, Black or Grey which are available in either black or white interiors allowing for any jewelry to stand out. Brand these boxes with your logo to make them your own.

STOCK NUMBER	DESCRIPTION	SIZE	12+	144+
A. J101	Ring	2"W x 2"D x 1 5/8"H	\$6.19	\$4.95
B. J103	Stud Earring	2"W x 1 5/8"D x 1 5/8"H	\$6.49	\$5.19
C. J105	Pendant/Multi-Use	3"W x 3 5/8"D x 1 1/4"H	\$7.99	\$6.39
D. J108	Bracelet	8"W x 2 1/8"D x 1"H	\$11.99	\$9.59

FREE inside imprinting. FREE matching sleeve. Imprinting of deluxe sleeve is available at €25 each. BLACK boxes come with Black interiors. GREY boxes come with White interiors.



A



B

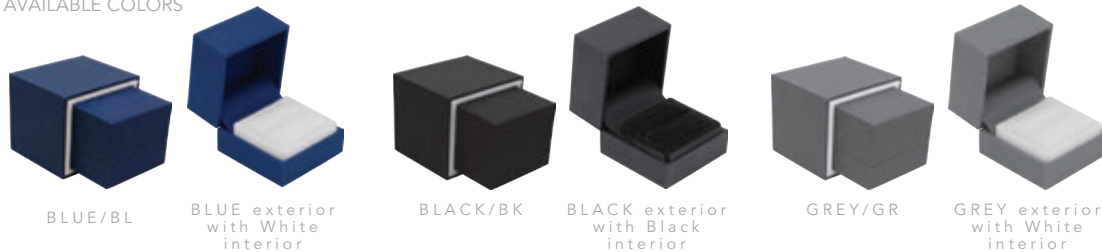


C



D

AVAILABLE COLORS





THE HERITAGE COLLECTION

Our Heritage Collection is a great edition to any stores packaging option. Vintage inspired and covered in velvet with a silk lip, these classic boxes make your rings stand out while still showcasing your stores brand. Sold in groups of 12 with an assortment of six different colors to add some classic flair to your customers next purchase. Brand these boxes with your logo on top of the outer packer as well to make them your own.



STOCK NUMBER	DESCRIPTION	SIZE	12+	144+
H01	Ring	2"W x 2"D x 2"H	\$4.19	\$3.36

FREE inside top-liner imprinting.
 FREE outer packer.
 Imprinting of outer packer is available at €25 each.
 FREE Print die.
 Sold by the dozen in an assortment of 6 colors - 2 of each.

AVAILABLE COLORS





SLIM ENGAGEMENT RING BOX

The Slimmest Engagement ring box. Don't reveal the Secret until you pop the question with this well-hidden gem of a box. When it opens the ring is lifted upright to sit on display.

STOCK NUMBER	DESCRIPTION	SIZE	12+	144+
E101BK	One Size & One Color	2 3/4"W x 3 1/4"D" x 3/4"H	\$4.82	\$3.86

FREE inside imprinting.
 FREE matching sleeve.
 Imprinting of outer sleeve is available at €25 each.

AVAILABLE
 COLORS



BLACK/BK





THE RADIANCE COLLECTION

Elegant and stylish design. This collection of boxes is carefully handcrafted and wrapped in shimmering palladium leatherette inside and out. Finished with a coordinating outer packer to really complete the look. Brand these boxes with your logo on the inside and outside packer to make them your own.

STOCK NUMBER	DESCRIPTION	SIZE	12+	144+
A. F101PL	Ring	1 7/8"W x 1 7/8"D x 1 1/2"H	\$6.35	\$5.08
B. F103PL	Stud Earring	1 7/8"W x 1 7/8"D x 1 1/2"H	\$6.46	\$5.17
C. F104PL	Pendant/Multi-Use	2 3/4"W x 2 3/4"D x 1 1/2"H	\$8.59	\$6.87
D. F112PL	T-Hoop	2 3/4"W x 2 3/4"D x 1 1/2"H	\$8.66	\$6.93
E. F109PL	Bangle/Bracelet	3 1/2"W x 3 1/2"D x 1 1/2"H	\$11.96	\$9.57
F. F200PL	Pouch	3 1/2"W x 4 1/4"H	\$3.46	\$2.77

FREE inside imprinting.
 FREE coordinated outer packer.
 Imprinting of outer packer lid is available at €25 each.



A



B



C



D



E



F

AVAILABLE COLOR



PALLADIUM/PL





THE MATTE WOOD COLLECTION

These elegant wood boxes have a matte finish with a white leatherette interior. Two piece white packer is included in this series to provide your customer with a top of the line experience. Brand these boxes with your logo on the inside to make them your own.

STOCK NUMBER	DESCRIPTION	SIZE	12 +	144+
A. W101	Ring	2 1/4"W x 2 1/4"D x 2 3/16"H	\$10.54	\$8.43
B. W103	Stud Earring	2 1/4"W x 2 1/4"D x 2 3/16"H	\$10.54	\$8.43
C. W107	Pendant	3"W x 4 1/8"D x 1 5/8"H	\$15.41	\$12.33

FREE inside imprinting.
 FREE matching sleeve.
 Printing on top of white packer is €25 each.



A



B



C

AVAILABLE COLORS



MATTE WOOD





THE CONTEMPO COLLECTION

Uniqueness is exactly what this collection boasts. Its rich ostrich textured exterior, white leatherette interior and coordinating packer offer a complete presentation. This collection is available in blue or black. Brand these boxes with your logo on the inside and on top of the packer to make them your own.

STOCK NUMBER	DESCRIPTION	SIZE	12+	144+
A. V116	Ring	2 5/8"W x 2"D x 2"H	\$6.99	\$5.59
B. V103	Stud Earring	2 5/8"W x 1 5/8"D x 1 3/4"H	\$6.07	\$4.86
C. V104	Multi-Use Pad	3 1/8"W x 2 3/4"D x 1 1/2"H	\$7.85	\$6.28
D. V105	Multi-Use Pad	4 5/16"W x 3 5/8"D x 1 5/8"H	\$9.77	\$7.82
E. V108	Bracelet / Watch	9 1/2"W x 2 3/8"D x 1 9/16"H	\$12.21	\$9.77
F. V112	T-Hoop Earring	3 1/8"W x 2 3/4"D x 1 5/8"H	\$8.03	\$6.42
G. V122	Large T-Hoop Earring	4 5/16"W x 3 5/8"D x 1 5/8"H	\$11.43	\$9.14

FREE inside imprinting.
 FREE matching outer packer.
 Imprinting of outer packer is available at €25 each.

AVAILABLE COLORS



BLUE/BL



BLACK/BK



A



B



C



D



E



F



G





THE CAMELOT II COLLECTION

Newly redesigned with a modern touch. This collection offers a luxurious blue leather exterior and white leatherette interior that is complemented by a coordinating packer. Brand these boxes with your logo on the inside and on top of the packer to make them your own.

STOCK NUMBER	DESCRIPTION	SIZE	12+	144+
A. D221BL	Ring	2 1/16"W x 2 1/16"D x 1 3/4"H	\$6.88	\$5.50
B. D223BL	Stud Earring	2 1/16"W x 2 1/16"D x 1 3/4"H	\$6.90	\$5.52
C. D224BL	Multi-Use Pad	2 3/4"W x 2 3/4"D x 1 1/2"H	\$9.73	\$7.78
D. D225BL	Multi-Use Pad	3 1/2"W x 3 1/2"D x 1 5/8"H	\$11.39	\$9.11
E. D222BL	T-Hoop Earring	2 3/4"W x 2 3/4"D x 1 1/2"H	\$9.52	\$7.62

FREE inside imprinting.
 FREE matching outer packer.
 Imprinting of outer packer lid is available at €25 each.



A



B



C



D



E

AVAILABLE COLORS



BLUE/BL





THE MAJESTIC COLLECTION

Stand out with style. These distinctive round corner boxes feature a contour shape with a lizard texture exterior and leatherette interior. This collection is available in carbon or wine and has a matching outer packer. Brand these boxes with your logo on the inside and on top of the packer to make them your own.

STOCK NUMBER	DESCRIPTION	SIZE	12+	144+
A. A101	Ring	2 1/4"W x 2 1/4"D x 1 13/16"H	\$6.78	\$5.42
B. A103	Stud Earring	2 1/4"W x 2 1/4"D x 1 13/16"H	\$7.25	\$5.80
C. A104	Multi-Use Pendant	2 3/4"W x 3"D x 1 3/8"H	\$8.74	\$6.99
D. A105	Multi-Use Pendant	3 3/4"W x 3 3/4"D x 1 13/16"H	\$12.98	\$10.38
E. A108	Bracelet/Watch	9 7/16"W x 2 1/8"D x 1 1/4"H	\$13.98	\$11.18
F. A112	T-Hoop Earring	2 3/4"W x 3"D x 1 3/8"H	\$8.74	\$6.99

FREE inside imprinting.
 FREE matching outer packer.
 Imprinting of outer packer and lid is available at €25 each.



A



B



C



D



E



F

AVAILABLE COLORS



WINE/WN



CARBON/CA





THE CAROUSEL COLLECTION

These one-of-a-kind shaped boxes are unique in every way. This collection has a matte leatherette exterior and a rich white velvet interior. Available in either blue or burgundy with a white two-piece outer packer. Brand these boxes with your logo on the inside and on top of the packer to make them your own.

STOCK NUMBER	DESCRIPTION	SIZE	12+	144+
A. L101	Ring	2 3/8"W x 1 15/16"D x 1 9/16"H	\$4.48	\$3.58
B. L103	Stud Earring	2 3/8"W x 1 15/16"D x 1 9/16"H	\$4.66	\$3.73
C. L104	Multi-Use Pendant	2 7/8"W x 2 5/8"D x 1 1/2"H	\$6.69	\$5.35
D. L105	Multi-Use Pendant	3 7/8"W x 3 1/4"D x 1 1/2"H	\$7.41	\$5.93
E. L108	Bracelet/Watch	8 5/8"W x 2 1/16"D x 1 1/8"H	\$9.34	\$7.47
F. L112	T-Hoop Earring	2 7/8"W x 2 5/8"D x 1 1/2"H	\$6.70	\$5.36
G. L122	T-Hoop Earring	3 3/4"W x 3 3/4"D x 1 13/16"H	\$8.50	\$6.80

FREE inside imprinting.
 FREE white outer packer.
 Imprinting of outer packer and lid is available at c25 each.



A B



C D



E F



G

AVAILABLE COLORS



BURGUNDY/BU BLUE/BL





THE CROWN COLLECTION

Our most popular collection is wrapped in a leatherette exterior with a white velvet interior. There are four colors to choose from - black, blue, burgundy, or green - and a variety of styles from which to pick. This collection is complete with a matching two-piece outer packer. Brand these boxes with your logo on the inside and on top of the packer to make them your own.

STOCK NUMBER	DESCRIPTION	SIZE	12+	144+
A. K101	High Dome Ring	2"W x 2 5/16"D x 1 3/4"H	\$4.40	\$3.52
B. K102	Double Ring	2 3/4"W x 2"D x 1 1/2"H	\$6.55	\$5.24
C. K103	Earring	2"W x 2 1/8"D x 1 1/2"H	\$4.57	\$3.65
D. K104	Reversible Hoop Ear./Pend.	2 3/4"W x 2 3/4"D x 1 1/2"H	\$6.55	\$5.24
E. K105	Multi-Use Pad	3 1/2"W x 3 1/2"D x 1 1/4"H	\$8.31	\$6.65
F. K107	Multi-Use Pad	2 3/4"W x 4"D x 1 1/4"H	\$7.08	\$5.66
G. K108	Bracelet	8 1/2"W x 2 1/8"D x 1"H	\$8.50	\$6.80
H. K109	Bangle / Watch	3 1/2"W x 4 1/4"D x 2 1/2"H	\$11.32	\$9.06
I. K112	T-Hoop	2 3/4"W x 2 3/4"D x 1 1/2"H	\$7.70	\$6.16
J. K137*	Large T-Hoop	2 3/4"W x 4"D x 1 1/4"H	\$7.08	\$5.66
K. 15685	Omega/Necklace/Pearl	6 1/2"W x 8 1/2"H	\$9.62	\$7.70

FREE inside imprinting.
 FREE coordinated outer packer.
 Imprinting of outer packer and lid is available at €25 each.
 * K137 is available in Burgundy only.



AVAILABLE COLORS



BLUE/BL BLACK/BK BURGUNDY/BU GREEN/GN





THE CROWN BLACK COLLECTION

If you are looking for boxes that will make your diamonds shine, our Crown Black Collection is for you. These hinged boxes have a leatherette exterior, velvet interior, and come with a matching packer. Brand these boxes with your logo on the inside and top of the packer to make them your own.

STOCK NUMBER	DESCRIPTION	SIZE	12+	144+
A. K114	Ring	2"W x 2 5/16"D x 1 3/4"H	\$4.40	\$3.52
B. K115	Earring	2"W x 2 1/8"D x 1 1/2"H	\$4.57	\$3.65
C. K116	T-Hoop	2 3/4"W x 2 3/4"D x 1 1/2"H	\$7.70	\$6.16
D. K117	Multi-Use Pad	2 3/4"W x 4"D x 1 1/4"H	\$7.08	\$5.66
E. K118	Bracelet/Watch	8 1/2"W x 2 1/8"D x 1"H	\$8.50	\$6.80

FREE inside imprinting.
 FREE matching outer packer.
 Imprinting of outer packer lid is available at c25 each.



A



B



C



D



E

AVAILABLE COLORS



BLACK/BK





THE LUMINOUS COLLECTION

Your jewelry will really shine with this collection. Available in a golden textured leatherette exterior and white velvet interior. Brand these boxes with your logo on the inside to make them your own. And there is no need to gift wrap this box, as it comes complete with a white organza bow on the two-piece outer packer that completes the gift look.

STOCK NUMBER	DESCRIPTION	SIZE	12+	144+
A. 8801GL	Ring	2"W x 2 1/8"D x 1 3/4"H	\$5.15	\$4.12
B. 8803GL	Stud Earring	2"W x 2 1/8"D x 1 1/2"H	\$5.15	\$4.12
C. 8805GL	Multi-Use Pad	3 1/2"W x 3 1/2"D x 1 1/4"H	\$8.47	\$6.78
D. 8807GL	Multi-Use Pad	2 3/4"W x 4"D x 1 1/4"H	\$7.42	\$5.94
E. 8808GL	Bracelet/Watch	8 5/8"W x 2 1/8"D x 1"H	\$9.49	\$7.59
F. 8812GL	T-Hoop Earring	2 3/4"W x 2 3/4"D x 1 1/2"H	\$7.22	\$5.78

FREE inside imprinting.
FREE coordinated outer packer.



AVAILABLE COLORS



GOLD/GL





THE REGENCY COLLECTION

This classic collection offers a soft padded leatherette exterior and interior with coordinating outer packer. Available in either black or white. This collection is complete with a coordinating two piece outer packer. Brand these boxes with your logo on the inside and on top of the packer to make them your own.

STOCK NUMBER	DESCRIPTION	SIZE	12+	144+
A. G101	Ring	2"W x 2 1/8"D x 2"H	\$4.28	\$3.42
B. G102	Double Ring	2 7/8"W x 2"D x 1 1/2"H	\$5.97	\$4.78
C. G103	Stud Earring	2"W x 2 1/8"D x 1 1/2"H	\$4.42	\$3.54
D. G104	Stud Earring / Pendant	2 3/4"W x 2 3/4"D x 1 1/2"H	\$5.75	\$4.60
E. G105	Multi-Use Pad	3 1/2"W x 3 1/2"D x 1 1/4"H	\$8.09	\$6.47
F. G107	Multi-Use Pad	2 3/4"W x 4"D x 1 1/4"H	\$7.55	\$6.04
G. G108	Bracelet	8 5/8"W x 2 1/8"D x 1"H	\$9.22	\$7.38
H. G112	T-Hoop Earring	2 3/4"W x 2 3/4"D x 1 1/2"H	\$5.97	\$4.78
I. G117*	T-Hoop/Multi Use	2 3/4"W x 4"D x 2 1/2"H	\$6.79	\$5.43
J. 15684	Omega / Pearl Folder	6 1/2"W x 8 1/2"H	\$7.67	\$6.14

FREE inside imprinting.
 FREE matching outer packer.
 Imprinting of outer packer lid is available at c25 each.
 *The G117 is available in BLACK only.



AVAILABLE COLORS



BLACK/BK



WHITE/WH





THE PRESIDENTIAL COLLECTION

A timeless and classic design. This plush velvet exterior and interior box collection is available in two colors, black or blue, and comes complete with a white two-piece outer packer. Brand these boxes with your logo on the inside and on top of the packer to make them your own.

STOCK NUMBER	DESCRIPTION	SIZE	12+	144+
A. 100W1	Ring	1 7/8"Wx 2 1/8"Dx 1 3/8"H	\$3.57	\$2.86
B. 102W1	Double Ring	2 1/2"Wx2"Dx1 1/2"H	\$4.37	\$3.49
C. 100D2	Earring/Tie Tack/Charm	1 7/8"Wx2 1/8"Dx1 3/8"H	\$3.57	\$2.86
D. 102D4	Hoop Earring	2 1/2"Wx2"Dx1 1/2"H	\$4.37	\$3.49
E. 104D4	Hoop Earring	2 5/8"Wx2 5/8"Dx1 1/8"H	\$5.15	\$4.12
F. 104D5	T-Hoop Earring	2 5/8"Wx2 5/8"Dx1 1/8"H	\$5.91	\$4.73
G. 104D3	Pendant	2 5/8"Wx2 5/8"Dx1 1/8"H	\$4.95	\$3.96
H. 104W3	Deluxe Pend. / Ear.	2 1/2"Wx3 3/8"Dx1 1/8"H	\$5.71	\$4.57
I. 107D3	Pendant	2 5/8"Wx2 5/8"Dx1 1/8"H	\$4.95	\$3.96
J. 107W2	Multi-Use Pad	2 1/2"Wx3 3/8"Dx1 1/8"H	\$5.52	\$4.42
K. 106W4	Necklace	7 1/4"Wx4 1/4"Dx1 1/8"H	\$11.06	\$8.85
L. 108D6	Bracelet	8 5/8"Wx2"Dx1"H	\$7.63	\$6.10
M. 104W4	Utility	2 5/8"Wx2 5/8"Dx1 1/8"H	\$5.52	\$4.42
N. 105W4	Utility	3 7/8"Wx3 1/4"Dx1 1/4"H	\$5.71	\$4.57

FREE inside imprinting.

FREE outer packer.

Imprinting of outer packer lid is available at €25 each.

* T-Hoop only available in white or black pad.

* All boxes available with all white or all black interior.

AVAILABLE COLORS



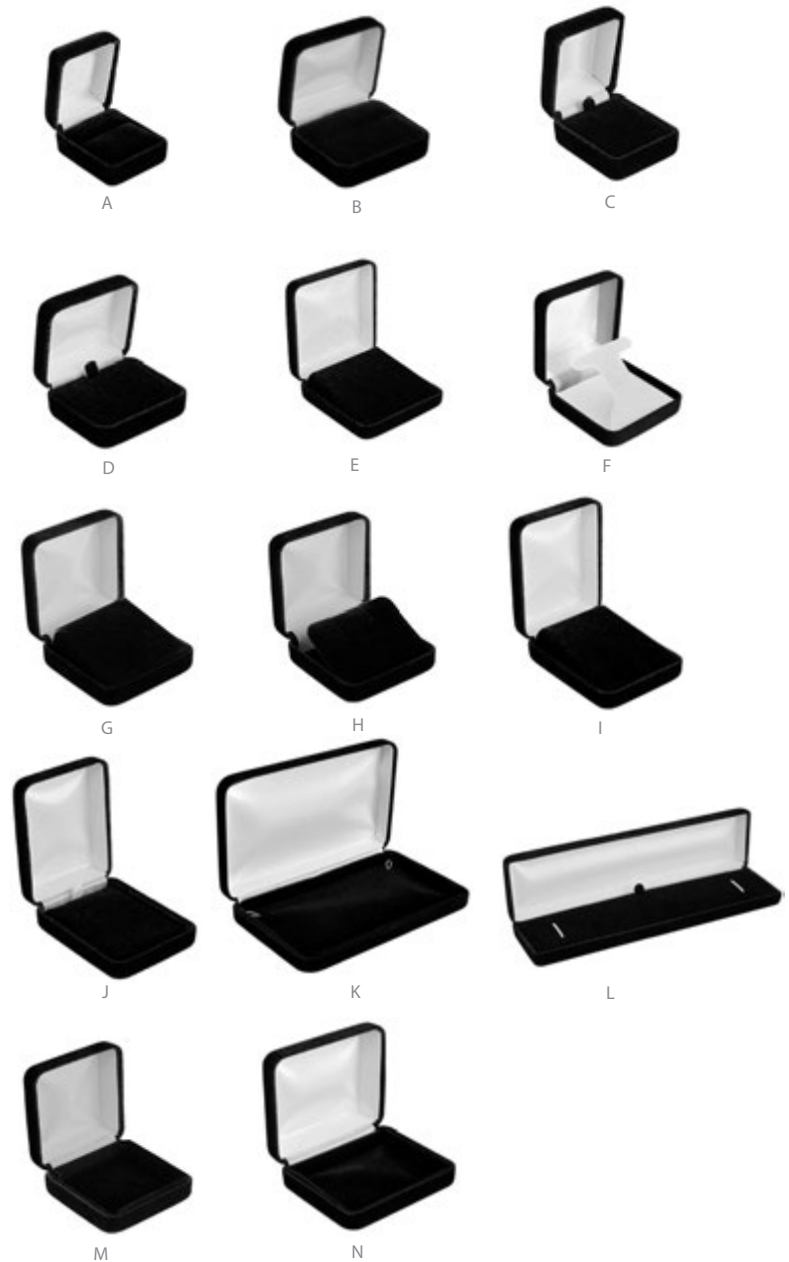
BLUE/BL



BLACK/BK



*ALL BOXES AVAILABLE WITH ALL WHITE OR ALL BLACK INTERIOR.





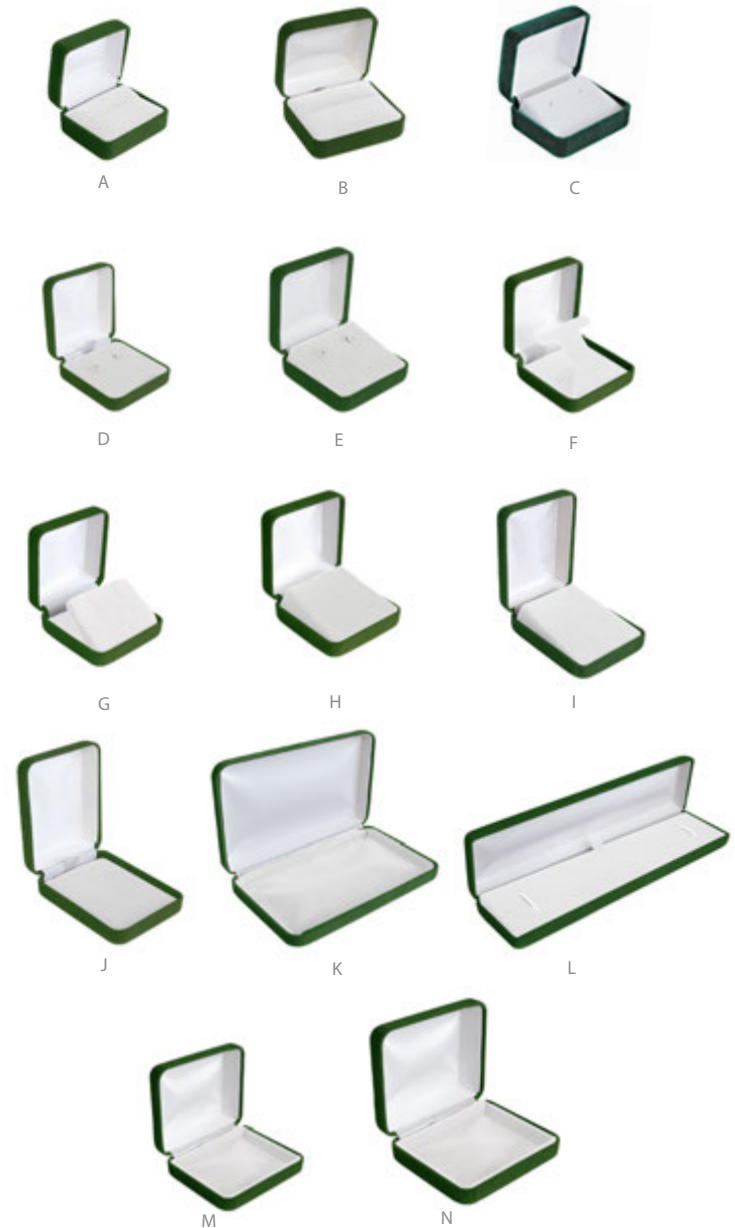
THE CELEBRATIONS PLUS COLLECTION

With a white velvet interior and velour exterior, this collection showcases any merchandise you have. Available in light grey, black, blue, burgundy, or forest green, so there is sure to be a color for your brand. This collection comes complete with a two piece white outer packer. Brand these boxes with your logo on the inside and on top of the packer to make them your own.

STOCK NUMBER	DESCRIPTION	SIZE	12+	144+
A. 501W1	Ring	2 1/8"W x 1 7/8"D x 1 1/4"H	\$2.83	\$2.27
B. 502W1	Double Ring	2 1/2"W x 2"D x 1 1/2"H	\$3.81	\$3.05
C. 501D1	Earring	2 1/8"W x 1 7/8"D x 1 3/8"H	\$2.75	\$2.20
D. 502D4	Hoop Earring	2 1/2"W x 2"D x 1 1/2"H	\$3.73	\$2.99
E. 504D4	Hoop Earring	2 5/8"W x 2 5/8"D x 1 1/8"H	\$4.11	\$3.29
F. 504D5	T-Hoop Earring	2 5/8"W x 2 5/8"D x 1 1/8"H	\$5.07	\$4.06
G. 504W3	Reversible Deluxe Pend./Ear.	2 5/8"W x 2 5/8"D x 1 1/8"H	\$5.15	\$4.12
H. 504D3	Pendant	2 5/8"W x 2 5/8"D x 1 1/8"H	\$4.37	\$3.50
I. 507D3	Pendant	2 1/2"W x 3 3/8"D x 1 1/8"H	\$4.57	\$3.66
J. 507W2	Multi-Use Pad	2 1/2"W x 3 3/8"D x 1 1/8"H	\$5.15	\$4.12
K. 506W4	Necklace	7 1/8"W x 4 1/4"D x 1 1/8"H	\$10.31	\$8.25
L. 508D6	Bracelet	8 5/8"W x 2"D x 1"H	\$7.24	\$5.80
M. 504W4	Utility	2 5/8"W x 2 5/8"D x 1 1/8"H	\$5.15	\$4.12
N. 505W4	Utility	3 7/8"W x 3 1/4"D x 1 1/4"H	\$6.59	\$5.28

FREE inside imprinting.
 FREE outer packer.
 Imprinting of outer packer lid is available at €25 each.

AVAILABLE COLORS





THE CELEBRATIONS COLLECTION

Available in five colors and 14 styles, this collection has a great deal to offer. Economically priced, these boxes have a velour exterior and interior and white two piece outer packer. Brand these boxes with your logo on the inside and on top of the packer to make them your own.

STOCK NUMBER	DESCRIPTION	SIZE	12+	144+
A. 301W1	Ring	2 1/8"W x 1 7/8"D x 1 1/4"H	\$2.57	\$2.06
B. 302W1	Double Ring	2 1/2"W x 2"D x 1 1/2"H	\$3.34	\$2.68
C. 301D1	Earring	2 1/8"W x 1 7/8"D x 1 3/8"H	\$2.57	\$2.06
D. 302D4	Hoop Earring	2 1/2"W x 2"D x 1 1/2"H	\$3.54	\$2.84
E. 304D4	Hoop Earring	2 5/8"W x 2 5/8"D x 1 1/8"H	\$3.73	\$2.99
F. 304D5	T-Hoop Earring	2 5/8"W x 2 5/8"D x 1 1/8"H	\$4.11	\$3.29
G. 304W3	Reversible Deluxe Pend./Ear.	2 5/8"W x 2 5/8"D x 1 1/8"H	\$4.76	\$3.81
H. 304D3	Pendant	2 5/8"W x 2 5/8"D x 1 1/8"H	\$3.73	\$2.99
I. 307D3	Pendant	2 1/2"W x 3 3/8"D x 1 1/8"H	\$3.99	\$3.20
J. 307W2	Multi-Use Pad	2 1/2"W x 3 3/8"D x 1 1/8"H	\$4.57	\$3.66
K. 306W4	Necklace	7 1/8"W x 4 1/4"D x 1 1/8"H	\$9.16	\$7.33
L. 308D6	Bracelet	8 5/8"W x 2"D x 1"H	\$6.29	\$5.04
M. 304W4	Utility	2 5/8"W x 2 5/8"D x 1 1/8"H	\$4.37	\$3.50
N. 305W4	Utility	3 7/8"W x 3 1/4"D x 1 1/4"H	\$6.41	\$5.13

FREE inside imprinting. Imprinting of outer packer lid is available at €25 each.
 FREE outer packer. *304D5 available with black t-hoop insert. Available with an all black interior.





THE CARRIAGE COLLECTION

Versatility at its best. This collection has two sizes with white velvet multi-use pads & a reversible foam ring pad. This ensures each and every piece of jewelry will stand out. Available in black, blue or burgundy and each box includes a white sleeve. Brand these boxes with your logo on the inside and on top of the sleeve to make them your own.

STOCK NUMBER	DESCRIPTION	SIZE	12+	144+
A. 3201**	Ring / Earring	1 5/8"W x 1 3/4"D x 1 1/4"H	\$2.41	\$1.93
B. 3204*	Multi Earring/Pendant Pad	2 1/2"W x 2 1/2"D x 1"H	\$2.71	\$2.17
C. 3205*	Multi Earring/Pendant Pad	3 1/2"W x 3 1/2"D x 1 1/8"H	\$3.87	\$3.10

FREE inside imprinting.
 FREE white outer sleeve.
 Imprinting of outer sleeve is available at €25 each.

* White velvet wrapped Multi-Use pad.
 ** White/Black reversible foam pad.

AVAILABLE COLORS



BLACK/BK BLUE/BL BURGUNDY/BU

REVERSIBLE RING PADS



VELVET WRAPPED PADS



A



B



C



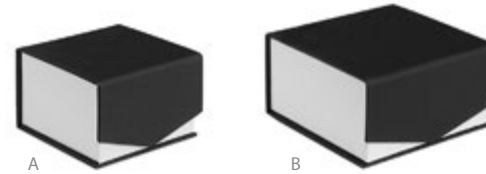


THE FORMAL MAGNETIC COLLECTION

These smooth-to-the-touch magnetic boxes offer the versatility of using the same box as a display or simply as elegant gift packaging. Inside there is a white/black reversible pad allowing for any jewelry and any color to stand out. Brand these boxes with your logo to make them your own. These boxes come finished with a white sleeve.

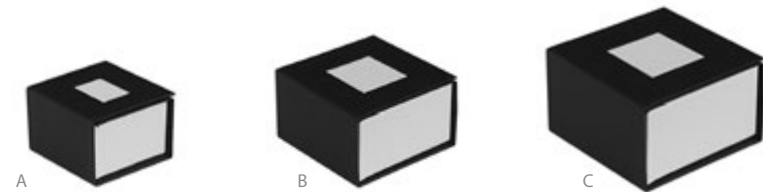
POINT FLAP Boxes

STOCK NUMBER	DESCRIPTION	SIZE	PACK	50	100
A. C582BK	Ring/Earring/Pendant	2 3/8"W x 2 3/8"D x 1 1/2"H	10	\$2.93	\$2.34
B. C583BK	Earring/Pendant	3 1/8"W x 3 1/8"D x 1 1/2"H	10	\$3.26	\$2.60



DOUBLE FLAP Boxes

STOCK NUMBER	DESCRIPTION	SIZE	PACK	50	100
A. C461BK	Ring/Earring	1 1/2"W x 1 1/2"D x 1 3/8"H	10	\$2.12	\$1.70
B. C462BK	Ring/Earring/Pendant	2 3/8"W x 2 3/8"D x 1 1/2"H	10	\$2.93	\$2.34
C. C463BK	Earring/Pendant	3 1/8"W x 3 1/8"D x 1 1/2"H	10	\$3.26	\$2.60



FREE top of box imprinting.
FREE white outer sleeve.

AVAILABLE IN BLACK



POINT-FLAP BOX

DOUBLE-FLAP BOX





THE FORMAL COLLECTION

These smooth-to-the-touch, two and three- piece boxes are available in three different sizes, offering packaging for a wide variety of jewelry. Inside there is a white/black reversible pad allowing for any jewelry and any color to stand out. Brand these boxes with your logo to make them your own. Each is finished with a white sleeve.

2 PIECE White Trim

STOCK NUMBER	DESCRIPTION	SIZE	PACK	50	100
A. C101BK	Ring/Earring	1 1/2"W x 1 1/2" x 1 3/8"	10	\$2.02	\$1.61
B. C102BK	Ring/Earring/Pendant	2 3/8"W x 2 3/8" x 1 1/2"	10	\$2.84	\$2.27
C. C103BK	Earring/Pendant	3 1/8"W x 3 1/8" x 1 1/2"	10	\$3.11	\$2.49

FREE top imprinting. FREE white outer sleeve.



3 PIECE White Trim

STOCK NUMBER	DESCRIPTION	SIZE	PACK	50	100
A. C221BK	Ring/Earring	1 1/2"W x 1 1/2"D x 1 3/8"H	10	\$2.02	\$1.61
B. C222BK	Ring/Earring/Pendant	2 3/8"W x 2 3/8"D x 1 1/2"H	10	\$2.84	\$2.27
C. C223BK	Earring/Pendant	3 1/8"W x 3 1/8"D x 1 1/2"H	10	\$3.11	\$2.49

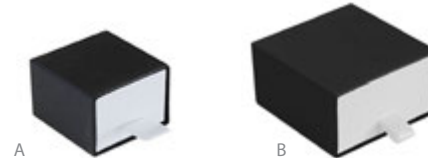
FREE top imprinting. FREE white outer sleeve.



DRAWER Box

STOCK NUMBER	DESCRIPTION	SIZE	PACK	50	100
A. C341BK	Ring/Earring	1 1/2"W x 1 1/2"D x 1 3/8"H	10	\$2.02	\$1.61
B. C342BK	Ring/Earring/Pendant	2 3/8"W x 2 3/8"D x 1 1/2"H	10	\$2.84	\$2.27

FREE top imprinting. FREE white outer sleeve.



AVAILABLE IN BLACK





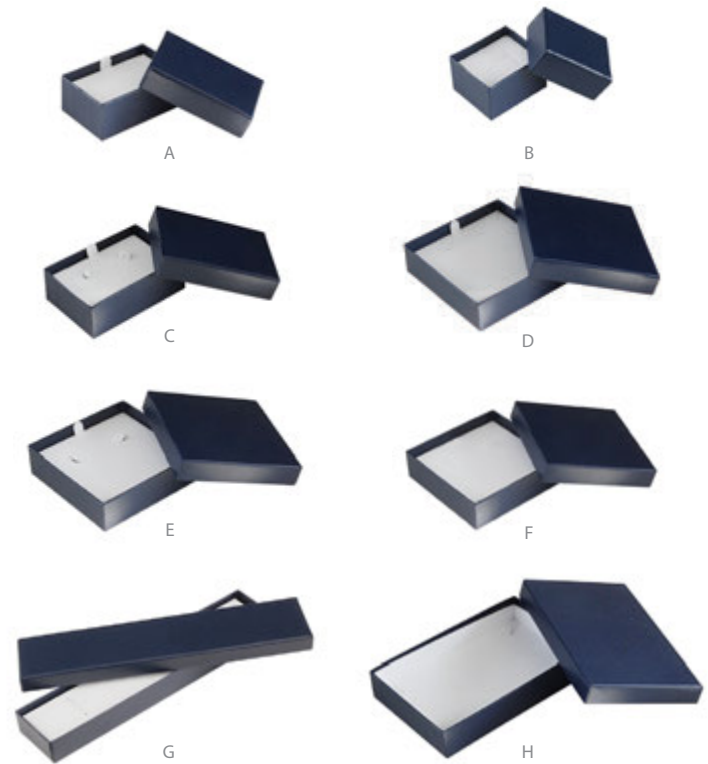
THE STERLING COLLECTION

Rich velvet white pads line the interior of these two-piece boxes. Available in six colors - white, black, blue, burgundy, silver, gold or kraft. Brand these boxes with your logo on top of the box to make them your own. Great for sterling silver jewelry.

STOCK NUMBER	DESCRIPTION	SIZE	12+	144+
A. 5212D2*	Earring / Pendant / Tie-Tac	2 1/2"W x 1 5/8"D x 1"H	\$2.15	\$1.72
B. 5213	Ring	2"W x 1 3/4"D x 1 1/4"H	\$1.96	\$1.57
C. 5214D4*	Hoop Earring	3"W x 2"D x 1"H	\$2.23	\$1.79
D. 5215D3*	Pendant	3 1/2"W x 3 1/2"D x 1"H	\$2.52	\$2.02
E. 5215D4*	Hoop Earring	3 1/2"W x 3 1/2"D x 1"H	\$2.52	\$2.02
F. 5215W4*	Utility	3 1/2"W x 3 1/2"D x 1"H	\$2.80	\$2.24
G. 5216D6	Bracelet	8"W x 1 3/4"D x 3/4"H	\$3.66	\$2.93
H. 5217W4*	Necklace	5 1/2"W x 3 1/2"D x 3/4"H	\$4.29	\$3.44

FREE top of box imprinting.

*Designates Kraft Boxes.



AVAILABLE COLORS



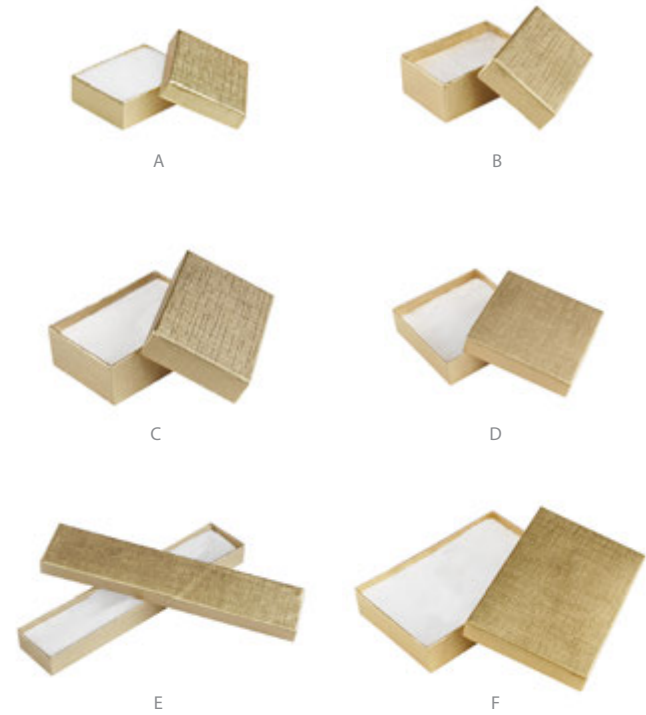


THE COTTON FILL COLLECTION

A great selection of colors and sizes to choose from. Available in white, black, blue, burgundy, gold, silver or kraft each box comes with one piece of cotton. Brand these boxes with your logo on top of the box to make them your own. A great complement to our pouch line.

STOCK NUMBER	SIZE	PACK	100	500
A. 5211	2"W x 1 1/2"D x 5/8"H	100	\$0.67	\$0.61
B. 5212*	2 1/2"W x 1 5/8"D x 1"H	100	\$0.70	\$0.63
C. 5214*	3"W x 2"D x 1"H	100	\$0.71	\$0.64
D. 5215*	3 1/2"W x 3 1/2"D x 1"H	100	\$0.83	\$0.75
E. 5216	8"W x 1 3/4"D x 3/4"H	100	\$0.86	\$0.78
F. 5217*	5 1/2"W x 3 1/2"D x 1"H	100	\$0.93	\$0.84

FREE top of box imprinting.
* Designates Kraft Boxes.



AVAILABLE COLORS



POUCHES AND MORE



THE POUCH COLLECTION

Perfect packaging for your economically priced items and even great for repairs. Brand these pouches with your logo to make them your own. Available in three sizes and four colors, they fit perfectly in our cotton fill line. Don't forget - pouches are kept by your customers long after the sale.

STOCK NUMBER	DESCRIPTION	SIZE	12+	144+
A. X115	SMALL with Divider	2"W x 2 1/12"H	\$1.14	\$0.91
B. X165	MEDIUM with Divider	2 3/4"W x 3 1/2"H	\$1.34	\$1.07
C. X250	LARGE	4"W x 5 1/2"H	\$1.70	\$1.36

FREE imprinting. See COTTON FILLED collection for outer packer options.



A



B



C

AVAILABLE COLORS



BLACK/BK

BURGUNDY BU

BLUE/BL

WHITE/WH
LEATHERETTE





THE PEARL FOLDER COLLECTION

Pearl folders are the perfect presentation for your pearls and necklaces. These items are kept by your customer and used for travel and storage. Available in two styles and a variety of colors to complement your packaging line. Brand them with your logo to make them your own.

DELUXE OMEGA / PEARL FOLDER

STOCK NUMBER	SIZE	12+	144+
A. 15685	6 1/2"W x 8 1/2"H	\$9.62	\$7.70

STANDARD OMEGA / PEARL FOLDER

STOCK NUMBER	SIZE	12+	144+
B. 15684	6 1/2"W x 8 1/2"H	\$7.67	\$6.14

FREE inside imprinting.
Imprinting of outer packer lid is available at €25 each.



DELUXE



BLACK/BK BLUE/BL BURGUNDY/BU GREEN/GN

AVAILABLE COLORS

STANDARD



BLACK/BK WHITE/WH





THE TOTE BAG COLLECTION

Our tote bags are available in two sizes and five colors - white, burgundy, black, green, or blue. They are the perfect end to every sale. Brand them with your logo to make them your own.

STOCK NUMBER	DESCRIPTION	SIZE	100	500
A. 93006	SMALL	6 1/2"W x 3 1/2"D x 6 1/2"H	\$1.33	\$1.06
B. 93007	LARGE	8"W x 4"D x 10"H	\$1.59	\$1.27

FREE imprinting.

AVAILABLE
COLORS



BLACK/BK



WHITE/WH



GREEN/GN



BLUE/BL



BURGUNDY BU



A



B

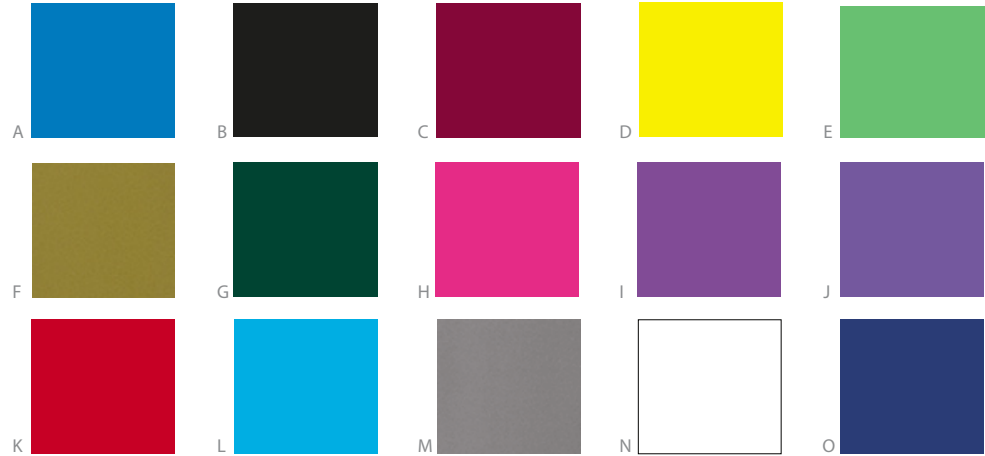


THE FINISHING TOUCH

Style your customers purchase with our Finishing Touch. Bows, wrapping paper and tissue for every season.

Tissue Paper

STOCK NUMBER	DESCRIPTION	SIZE	PACK	PRICE
A. 9240BBX	Brilliant Blue	20" x 30"	480	\$45.95
B. 9240BKX	Black	20" x 30"	480	\$45.95
C. 9240BUX	Burgundy	20" x 30"	480	\$45.95
D. 9240DLX	Dandelion	20" x 30"	480	\$45.95
E. 9240GGX	Groovy Green	20" x 30"	200	\$45.95
F. 9240GLX	Gold	20" x 30"	480	\$45.95
G. 9240GNX	Dark Green	20" x 30"	480	\$45.95
H. 9240HPX	Hot Pink	20" x 30"	480	\$45.95
I. 9240PRX	Purple	20" x 30"	480	\$45.95
J. 9240PWX	Periwinkle	20" x 30"	480	\$45.95
K. 9240RDX	Red	20" x 30"	480	\$45.95
L. 9240SLX	Silver	20" x 30"	200	\$52.95
M. 9240TQX	Turquoise	20" x 30"	480	\$45.95
N. 9240WHX	White	20" x 30"	480	\$26.95
O. 9240BLX	Navy Blue	20" x 30"	480	\$45.95



Jeweler's Giftwrap Roll

STOCK NUMBER	DESCRIPTION	SIZE	PRICE
A. 9300DHX	Golden Holly	7 3/8" x 100'	\$32.39
B. 9300GFX	Gold Feathers	7 3/8" x 100'	\$25.99
C. 9300GMX	Metallic Gold Moire	7 3/8" x 100'	\$47.95
D. 9300PSX	Pearl Stripe	7 3/8" x 100'	\$25.99
E. 9300RDX	Metallic Red Spun	7 3/8" x 100'	\$25.99
F. 9300RMX	Metallic Red Moire	7 3/8" x 100'	\$47.95
G. 9300SCX	Silver Cheetah	7 3/8" x 100'	\$32.39
H. 9300SHX	Scrolled Hearts	7 3/8" x 100'	\$25.99
I. 9300SLX	Metallic Silver Moire	7 3/8" x 100'	\$47.95
J. 9300VAX	Valentine Hearts	7 3/8" x 100'	\$25.99
K. 9300WGX	Metallic Warm Gold Spun	7 3/8" x 100'	\$47.95
L. 9300WHX	White Holly	7 3/8" x 100'	\$32.39
M. 9300XPX	Christmas Plaid	7 3/8" x 100'	\$32.39
N. 9300ZEX	Zebra	7 3/8" x 100'	\$25.99



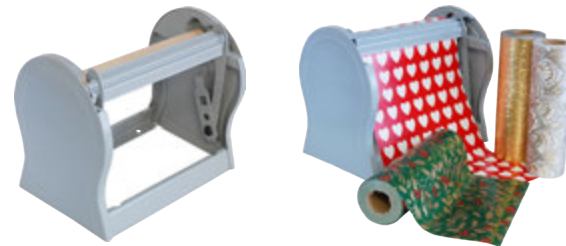
Bows

STOCK NUMBER	DESCRIPTION	SIZE	PACK	PRICE
A. 9401SLX	MINI Metallic Bow	1 1/4" x 1 1/4"	300	\$36.00
B. 9401GLX	MINI Metallic Bow	1 1/4" x 1 1/4"	300	\$36.00
C. 9402RLX	LARGE Metallic Bow	2" x 2"	300	\$37.69
D. 9402SLX	LARGE Metallic Bow	2" x 2"	300	\$37.69
E. 9402GLX	LARGE Metallic Bow	2" x 2"	300	\$37.69
F. 9403RDX	LARGE Bow	2 3/4" x 2 3/4"	200	\$17.99
G. 9403SLX	LARGE Bow	2 3/4" x 2 3/4"	200	\$17.99
H. 9403GLX	LARGE Bow	2 3/4" x 2 3/4"	200	\$17.99
I. 9403WHX	LARGE Bow	2 3/4" x 2 3/4"	200	\$17.99
J. 9405RDX	SMALL Bow	2" x 2"	300	\$29.99
K. 9405WHX	SMALL Bow	2" x 2"	300	\$29.99
L. 9406SLX	SMALL Elastic Bow	6"	100	\$11.79
M. 9406GLX	SMALL Elastic Bow	6"	100	\$11.79
N. 9416SLX	LARGE Elastic Bow	16"	100	\$14.99
O. 9416GLX	LARGE Elastic Bow	16"	100	\$14.99



Gift Wrap Cutter

STOCK NUMBER	SIZE	PACK	PRICE
9302X	9 1/4"W x 6 1/2"D x 8"H	1	\$49.46

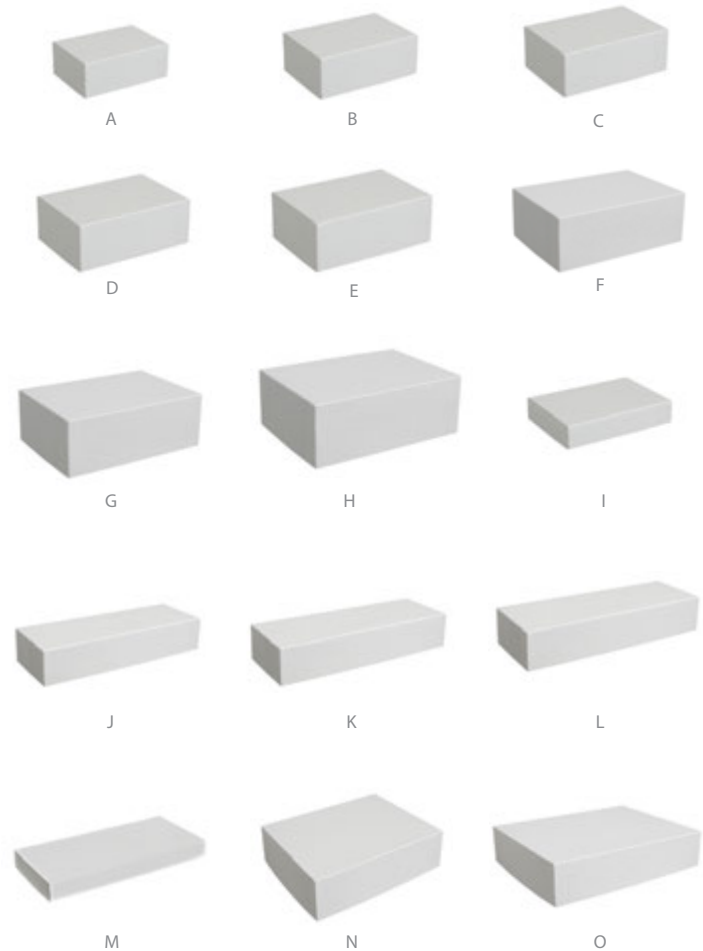




TAMPER-EVIDENT SHIPPING BOXES

Our tamper-evident shipping boxes provide peace of mind when shipping your merchandise. There are four sealing flaps, so there is no need for taping. These boxes meet US Postal Registered Mail requirements. Available in two colors and a variety of sizes.

STOCK NUMBER	SIZE	PACK	PRICE PER CASE			
			25	50	100	500
A. R2	4 1/8"W x 2 3/4"D x 1 1/2"H	100			\$72.00	\$63.00
B. R3 / MB3	4 5/8"W x 3 1/8"D x 1 3/4"H	100			\$75.00	\$67.00
C. R4 / MB4	5"W x 3 1/2"D x 1 7/8"H	100			\$72.00	\$65.00
D. R5 / MB5	5 1/2"W x 3 7/8"D x 1 15/16"H	50		\$47.50	\$43.00	\$38.00
E. R6 / MB6	6"W x 4 1/4"D x 2 3/16"H	50		\$53.50	\$48.00	\$43.00
F. R7 / MB7	6 3/4"W x 4 5/8"D x 1 1/2"H	50		\$64.00	\$57.50	\$51.00
G. R8 / MB8	7 1/2"W x 5"D x 2 3/4"H	50		\$69.00	\$62.00	\$55.50
H. R10/MB10	8 3/4"W x 6 1/2"D x 3 1/4"H	50	\$47.75	\$43.00	\$38.25	\$34.25
I. R40/MB40	5"W x 3 1/2"D x 3/4"H	100			\$62.00	\$55.00
J. R85/MB85	10"W x 3 3/8"D x 1 7/8"H	50		\$60.50	\$55.00	\$48.50
K. R87/MB87	10"W x 4 1/2"D x 2"H	50		\$64.00	\$57.50	\$51.00
L. R88/MB88	11"W x 3 3/8"D x 1 7/8"H	50		\$64.00	\$57.50	\$51.00
M. R89/MB89	10"W x 4 1/2"D x 1"H	50		\$56.50	\$50.50	\$45.50
N. R98/MB98	9"W x 7 3/4"D x 2 1/8"H	50	\$44.50	\$40.25	\$35.75	\$32.25
O. R99/MB99	11 1/8"W x 8 5/8"D x 2 1/2"H	50	\$54.25	\$49.00	\$43.50	\$39.00



CUSTOM BOXES





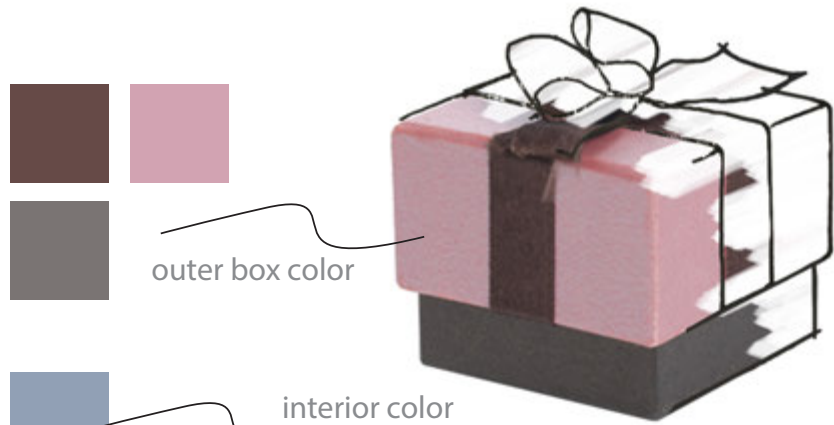
CUSTOM BOXES

Our in-house design department is one of the most creative and responsive in the industry. With over 40 years experience working with retail jewelers and manufacturers, we know how to listen and respond with the perfect packaging that reflects your vision.

The process is seamless. When you work with our team, we:

- Come with years of industry knowledge and material expertise.
- Design within a budget and time frame.
- Build prototype in the USA for easy sampling.
- Coordinate with our production teams to achieve your goals.
- Have multiple quality checkpoints ensure complete confidence in your order.
- Handle logistics throughout the whole process.
- Help fulfill urgency and concerns.
- Provide a large warehouse that allows us to hold and distribute your packaging when you need it.
- Deliver on time 98% of the time.
- Complete your brands with coordinated pouches, shopping bags and more.

Call or email to start your custom order!



Packaging is the marriage
between consumer and product.



outer box color

interior color



Custom Boxes

It may start as a scribble on the back of a napkin, but we know how to bring your designs to reality. Each idea is treated as an original concept by our design team. Simply tell us what you envision for the shape, the dimensions, the fabric and the style and leave the rest to us.





Custom Boxes

What do you do if the boat sinks? Call on the Presentation Box + Display liferaft. Occasionally orders can go wrong, and are delayed or there's a hitch. If you do hit an unexpected iceberg, don't worry, we can bail you out with new samples or alternative replacement packaging to get you through those turbulent times.

The speed that we can turn around samples leaves other companies in our wake.



PLACING AN ORDER

Phone 800-556-7390 (Mon-Fri 8:30-5pm EST)
Email Presboxsales@interpak.com
Website Presbox.com
Minimum Order \$100

PRICING

Pricing in our catalog is subject to change without notice.
Call for volume discounts.

PAYMENT

We accept all major credit cards as form of payment.
Terms of Net 30 days is available with approval of credit

LEAD TIME

Our lead times vary based on product line and size of order.

QUICK - SHIP PROGRAM

Exclusive to Presentation Box + Display, we offer a limited quantity of boxes printed with your logo shipped in just 2 business days.

FLEXSHIP PROGRAM

Exclusive to Presentation Box + Display, our FlexShip Program offers customers the ease of ordering packaging, buy having the boxes there when you need them at the best price!

Contact one of our representatives today for more information on these great programs!

SHIPPING

All orders ship out FOB Pawtucket RI via UPS unless otherwise requested.

BACKORDERS

While we strive to keep inventory in stock at all times, there may be an occasion when your product will go on back order. You will be notified from a representative when to expect the product to be available.

SPECIALS & PROMOTIONS

Please sign up with our Insiders Club to be notified of all our promotions and industry news!

Or follow us on



RETURNS

We must be notified within 15 days of shipping an order if you are dissatisfied with your order. We'll replace/refund any defective items provided we are contacted within 15 days of shipping an order. We are able to accept back non-imprinted, stock jewelry displays and packaging as long as they are returned in their original packaging and are free from any defects that may have been incurred after shipping. All returns will incur a 25% restocking fee.

All custom printed or made to order jewelry displays, cannot be returned and are non-refundable.

Please use the information provided below so that we can process your logo request to look its best.

WHAT IS REQUIRED FROM YOU:

1. FILE FORMAT

HIGH resolution (300dpi) file formatted in either a PDF or EPS generated in **Adobe Illustrator** is considered to be VECTOR artwork allowing it to be editable and resized without degrading the quality (clarity of the logo.) Customer artwork **MUST** be submitted via email.

- JPEG, TIFF, PSD or GIF files will NOT be accepted as these are not editable.
- Artwork pulled or copied from a website can NOT be accepted.

2. BLACK & WHITE

Logo artwork and/or text must be solid black on a WHITE background. Logo must **NOT** have any tints, screens or gradation. PC files are preferred. MAC files are accepted.

3. LOGO DESIGN

Your logo must be submitted sharp, solid and with clean edges. If there are too many intricate details we will NOT be able to produce a die of your logo.

4. LOGO WITH FONTS

Logos submitted with fonts **MUST** be converted to outlines or the customer will be responsible for providing the specific font files along with the artwork.

5. ESTIMATED PRICING & TIME FRAME

Presentation Box not only imprints your packaging for FREE, we offer one **FREE** Print Die on your first order over \$250. There is a one-time charge of \$60-85 per size die for customers purchasing a die for the first time. Die fees also apply to existing customers with a **NEW** logo.

WHAT HAPPENS NEXT:

1. VISUAL CONFIRMATION

Art files are checked by our staff for suitable file format and quality. If there is any problem with the file, you will be notified as soon as possible that new art is required. Any delays in sending replacement files may result in delayed production of your order.

PLEASE NOTE. If the logo submitted for a new die is not vector, or are not able to obtain a vector file of the logo, Presentation Box & Display will charge a \$40 per hour art charge in order to convert the file to Vector artwork. Additional fees may also apply if further revisions are needed.

2. LOGO SIZING

Our staff will work with you to suggest a size for the best fit within the inside lid of the jewelry box, pouches, inside top flap of pearl folders and tote bags. Below are 3 of the most commonly used.

SMALL Die: 1 1/4" wide. Use this die for your smaller boxes and pouches. Avoid small type and excessive information or imprint will appear hard to read. **\$60**

MEDIUM Die: 1 3/4" wide. Use this die for boxes such as bracelet, pendant and Multi-Use, to name a few. **\$85**

LARGE Die: 2 3/4" to 3 3/4" wide. Perfect for those larger items such as necklace boxes, tote bags and pearl folders. **\$100**

3. DIGITAL PROOF

We will send you a black & white digital proof to size to approve before die production. We will **ONLY** proceed to make a new die upon your approval of the digital proof.

4. PRINTING

Our method of printing is **Hot Stamping**, as a result your logo can only be printed using one color. Our stock foils are **Gold** and **Silver**. Other foil colors may be available, contact your customer service representative for details.

If you do not have a logo pick a **DESIGN OPTION** and **TYPE STYLE** below at no additional cost.

DESIGN Options:

- | | |
|---|---|
|  <p>A. Smith Jewelers
San Diego, California</p> |  <p>B. Smith Jewelers
Seattle, Washington</p> |
|  <p>C. Smith Jewelers</p> |  <p>D. Smith Jewelers</p> |
|  <p>E. Smith Jewelers
Jewelers Since 1900
Sarasota, Florida</p> |  <p>F. Smith Jewelers
Jewelers Since 1900</p> |

TYPE STYLE Options:

- | | |
|--|--|
| <p>A. Smith Jewelers
Microsoft Sans Serif</p> | <p>B. <i>Smith Jewelers</i>
Park Avenue BT</p> |
| <p>C. Smith Jewelers
Swiss 721 Condensed BT</p> | <p>D. Smith Jewelers
Myriad Pro Light</p> |
| <p>E. Smith Jewelers
Myriad Pro Bold</p> | <p>F. <i>Smith Jewelers</i>
Nuptial BT</p> |
| <p>G. <i>Smith Jewelers</i>
Brush Script Std. Medium</p> | <p>H. <i>Smith Jewelers</i>
Monotype Corsiva</p> |
| <p>I. Smith Jewelers
Century Gothic</p> | <p>J. Smith Jewelers
Eurostile</p> |
| <p>K. <i>Smith Jewelers</i>
Murray Hill Bold BT</p> | |



PRESENTATION BOX+DISPLAY
WE MAKE FIRST IMPRESSIONS LAST.

517 MINERAL SPRING AVE
WWW.PRESBOX.COM

PAWTUCKET, RI 02860
800.556.7390